

Primrose Free Range Eggs

Fresh eggs collected daily



Our location...

One of the main features of our site which make it suitable for a solar farm is that it is in an isolated and well screened location, is not close to homes or sensitive sites, and is not overlooked by communities.



The vast majority of the solar farm is open space and therefore is a perfect fit for our farm which currently raises several thousand chickens, giving the chickens space to roam under and around the panels.



Want to find out more?

The solar farm shall meet the local electricity needs of hundreds of average households whilst saving in the region of 1,900 tonnes of carbon dioxide each year.

If you would like any further information about this planned scheme please visit our website www.primrosefreerangeeggs.co.uk

Or e-mail Sun and Soil Ltd (who are helping us to develop the solar farm)
primrosehillfarm@sunandsoil.co.uk

If you agree with what we are doing and if you would like to support us in our plans to reduce our carbon emissions and produce green energy please feel free to contact

Planning Department
East Lindsey District Council
Tedder Hall
Manby Park, Louth
Lincolnshire
LN11 8UP

Primrose Free Range Eggs

Fresh eggs collected daily



Primrose Free Range Eggs

Fresh eggs collected daily

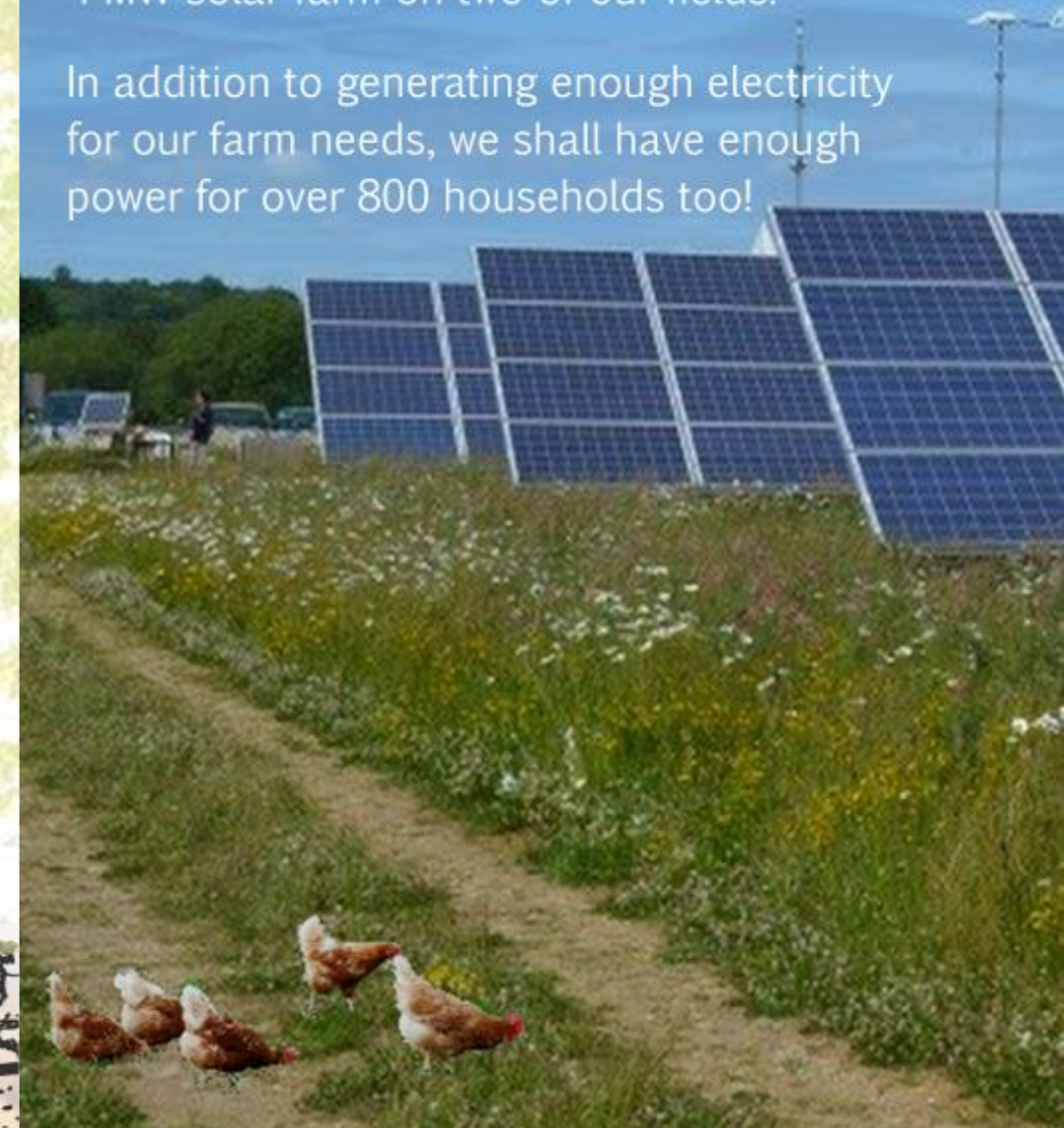


Proposed Solar Farm at Primrose Hill

Primrose Free Range Eggs is a family run business that since 2005 has been producing free range eggs (assured under the RSPCA Freedom Food Scheme) at Primrose Hill Farm near Wragby in Lincolnshire.

In the early spring of 2014 we shall be submitting a planning application to build a 4 MW solar farm on two of our fields.

In addition to generating enough electricity for our farm needs, we shall have enough power for over 800 households too!



Primrose Free Range Eggs

Fresh eggs collected daily



Introduction to our proposed development

We are very excited by the prospect of generating electricity from a sustainable source, contributing to the wider community by generating clean, renewable electricity. We feel that this project fits with our ethos of sustainability and consideration of the natural environment.



This type of renewable energy is ideal for us as the hens will be allowed to roam within the solar farm; the panels will provide shade for the hens when it is hot and shelter when it rains.

What our Solar Farm could look like...



As part of the planning application, ecology, landscape and traffic studies are being carried out. These will help to identify and minimise any effects on the local community and environment.

We will also be encouraging wildflowers within the solar farm and providing habitat for local wildlife.

